

REL – 5 Te WLL - 5500m - Electric Winch



TECHNICAL SPECIFICATION

Weight without cable (Kg)	Cable diameter (mm)	Capacity (m)	Line speed (m/min)		WLL (Kg)		Brake (Kg) Minimum 1.5 WLL	
			First Layer	Top Layer	First Layer	Top Layer	First Layer	Top Layer
6200	17.3	5500	45	76	5657	3360	10498	6236
Supply Required		380-440V-3 Ph- 50/60 Hz			Cable Lead-off Angle		+/-15° Horizontal plane Min -10° Max + 20° Vertical plane	
Level Wind Electrical Motor		45 Kw IP56 IE3			Frame details		Crash frame with guards, fork lifting pockets and certified lifting lugs	
Level Wind Electrical Motor		0.75 Kw IP56 IE3			Winch drum dimensions		Drum core Ø 720 mm, Drum Length 1910 mm, Flange Ø 1360 mm	
Local Proportional Control		Bi-directionally proportional joystick			Drum details		Spiral groove drum; the wire is stored in 17 lays with 125 turns per lay	
Hardwired Remote Control		Electrically automatic pulse driven level wind with manual adjustment			Cable		17.3 mm Coax 45 Ohm B.S.17.8 Te Spec 1SSA6 NOVACAVI	
Level wind		Dimensions (LxWxH)			Overboard Sheave		WLL 5Te with 12Te wireless load shackle	
Footprint		3120 x 2400 x 2448 mm						
Slip ring		3120 x 2400 mm			Designed to accept Trolex TX4847 or similar not within scope of supply			

Principle of Operation:

The winch barrel is mounted on an externally toothed slewing bearing. The bearing is driven by a pinon mounted on the output shaft of a SEW Electric Geared Motor fitted with a failsafe brake unit. The brake, being failsafe, always defaults to on should, for any reason, electrical supply is lost the brake will automatically be applied.

The Level wind electrically driven from the 0.75 kW SEW Electric gearmotor. The level wind is PLC controlled, is automatic with a manual override. The Level wind can be adjusted to accept a variety of cable diameters if required.

Speed control is continuously variable in increments of less than 0.05 m/s via the proportional joystick and a HMI displays Line Speed, Line Load, Line Out and Line In.

The winch is supplied with the following:

- 1 Set - sacrificial steel feet/mounting plates for mounting at ship
- Marine grade paint system (Details can be supplied on application)
- 1 Set - Master Links and Shackles or a 4 leg lifting sling and shackles
- 12 Month Warranty
- Canvas Cover for transport and storage
- Operation and Maintenance Manual in Electronic Format

Optional extras: - please note these are not in the scope of supply but can be offered at extra cost.

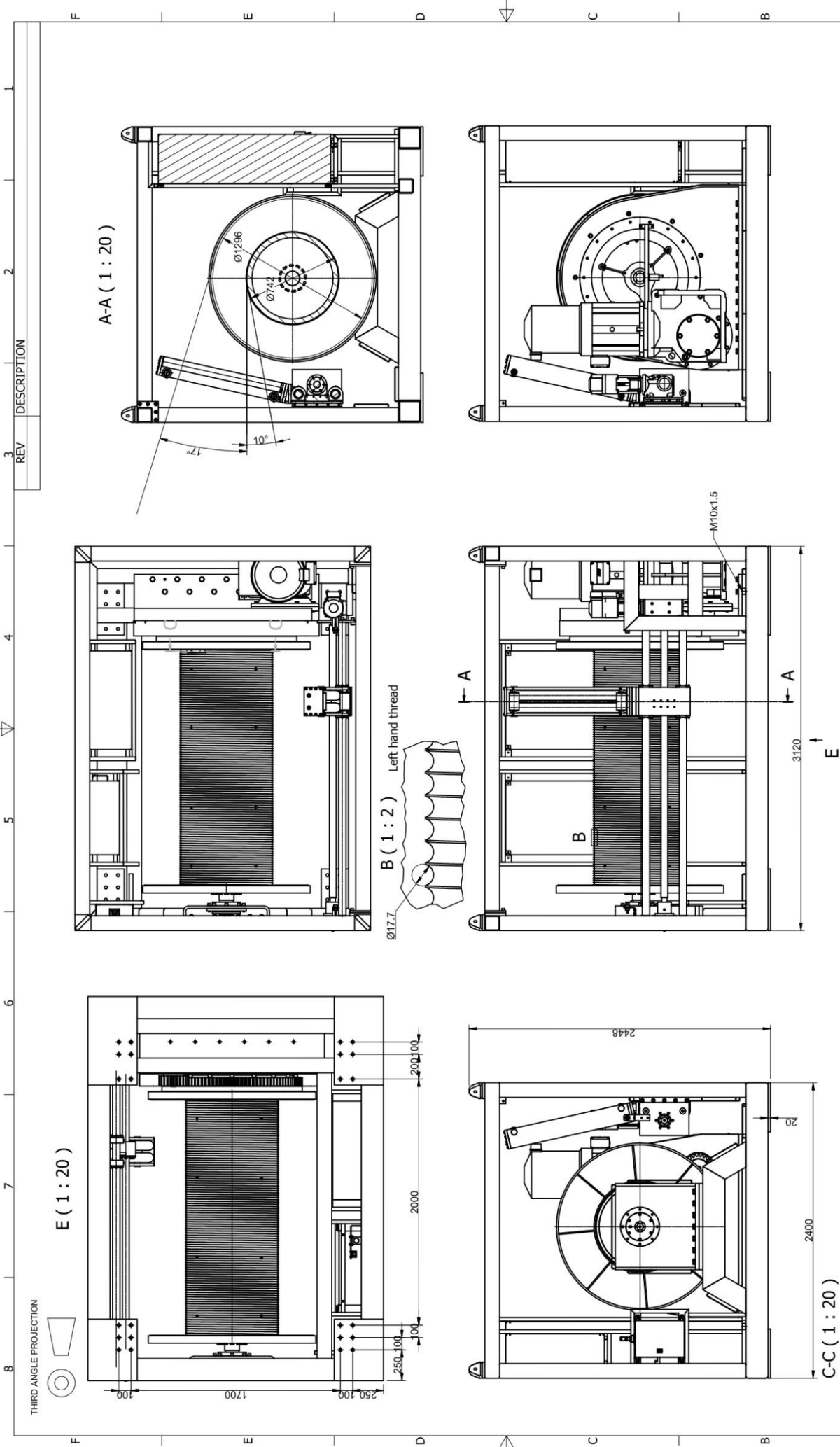
- 1 Off – Slip Ring details to be supplied with order
- 1 Off – Extended Warranty
- 1 Off – Winch running flashing lights and/or Klaxon
- 1 Off – Full Spares Kit
- 1 Off – Spare Programmed SD Card for level wind control.
- 1 Off – Laptop c/w software and leads for on-site fault diagnosis.
- 1 Set – Spare sacrificial feet/mounting plates
- Remote Control wireless



Romica Engineering Ltd (UK)

Romica Business Centre,
Beck View Road, Grovehill Road
Beverley, HU17 0JT, United Kingdom
P: (+44) 148 285 3884
F: (+44) 148 285 3884
www: <http://romica.co.uk/>





WEIGHT		CAPACITY		LINE SPEED		TECHNICAL SPECIFICATION				ITEM		DESCRIPTION		CONFIDENTIAL INFORMATION		WEIGHT		
DRUM CORE DIAMETER	CABLE DIAMETER	DRUM CORE DIAMETER	CAPACITY	LINE SPEED	TOP LAYER	DRUM LAYER	TOP LAYER	DRUM LAYER	TOP LAYER	DRUM LAYER	ITEM	PART No.	DESCRIPTION	No OFF	MATL.	No	WEIGHT	
5800 Kg	742 mm	17.3 mm	5500 m	60 m/min	2858 Kg	5000 Kg	5144 Kg	9000 Kg	9000 Kg	9000 Kg			romicaengineering					
ISSUE	DESIGNED	CHECKED	APPROVED	DATE	1.	2.	3.	4.	5.	6.	7.	8.	Romica Engineering Limited, Walsley Business Centre, Beck View Road, Beckwith, Rotherham, S64 5JG, England, United Kingdom. Tel/Fax: +44 (0)1482 653888 / Email: sales@romica.co.uk www.romica.co.uk				A2 SHT 1 OF 1	
													5 Te WLL 5500m Electric Winch		DS05		A2 SHT 1 OF 1	
													TITLE		DRG. No.			
													ORIGINAL SCALE					
													1:20					

CONFIDENTIAL INFORMATION
 ROMICA ENGINEERING LIMITED IS THE OWNER OF COPYRIGHT SUBSISTING IN RESPECT OF THIS DOCUMENT. IN THE EVENT OF ANY REPRODUCTION, EITHER WHOLE OR IN PART, WITHOUT THE WRITTEN PERMISSION OF ROMICA ENGINEERING LIMITED, THE REPRODUCER SHALL BE LIABLE FOR ALL LEGAL ACTION ARISING FROM THE INFRINGEMENT BY WAY OF CLIPPING DAMAGE.
 DRG. No.